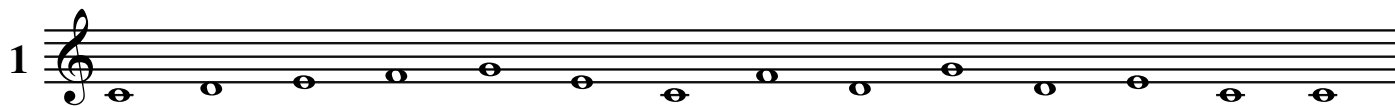
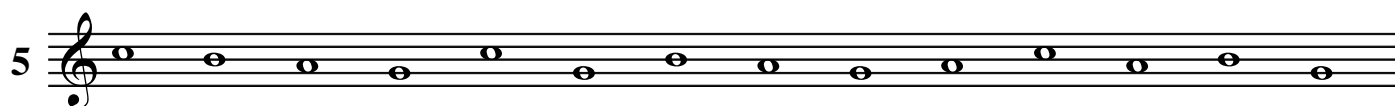
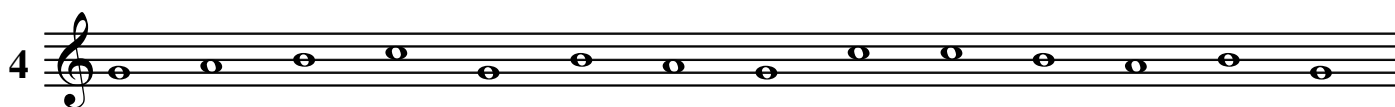
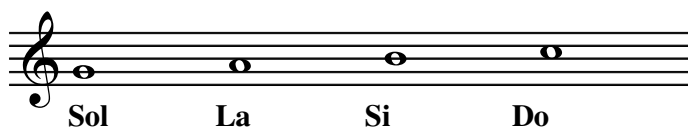


Lecture de notes: Do à Sol

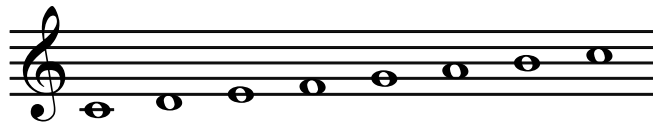
LN 1



Lecture de notes: Sol à Do

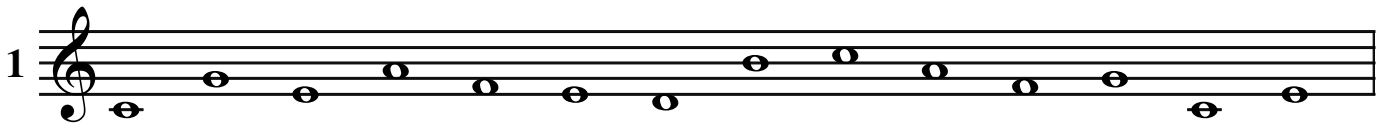


Lecture de notes: Do à Do

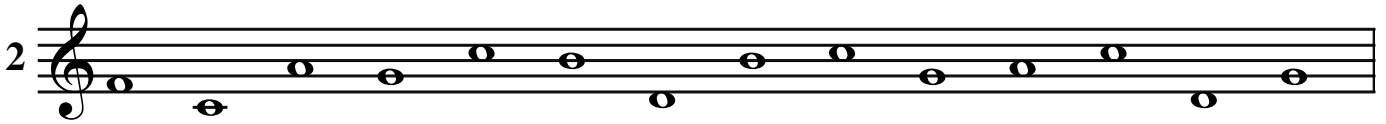


Do Ré Mi Fa Sol La Si Do

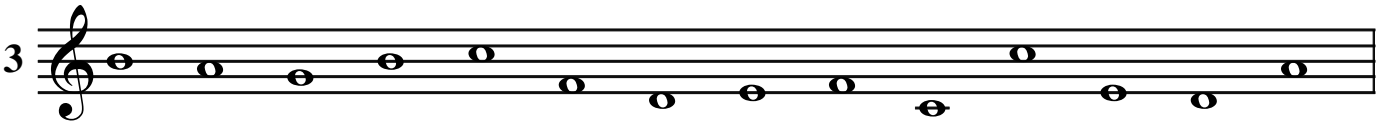
1



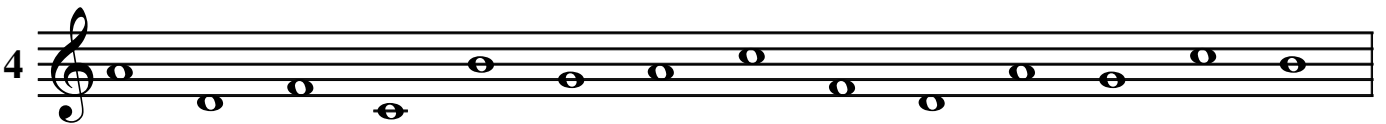
2



3



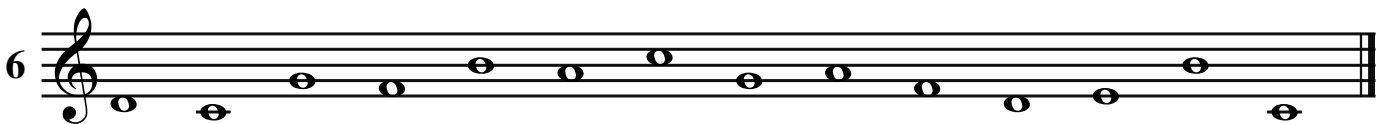
4



5

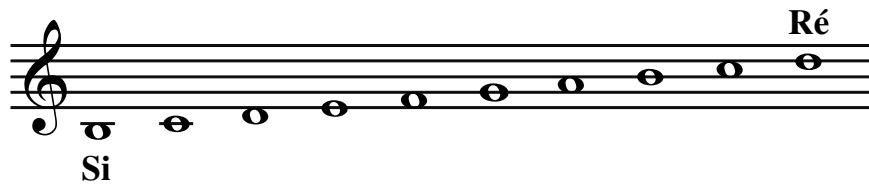


6



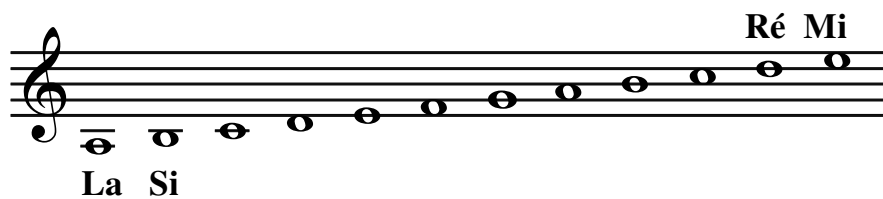
Lecture de notes: Si grave - Ré aigu

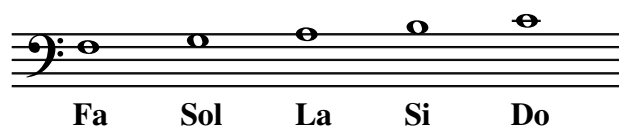
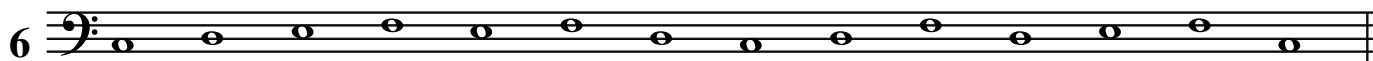
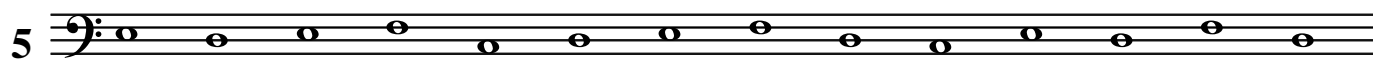
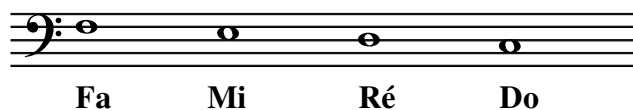
LN 3



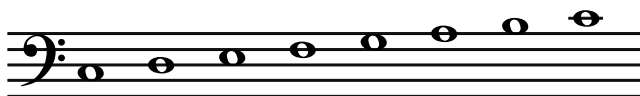
Lecture de notes: La grave - Mi aigu

LN4

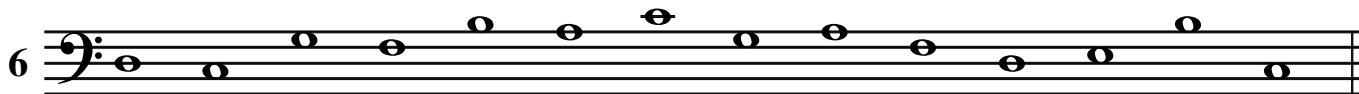
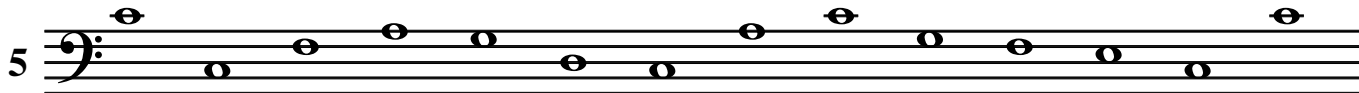
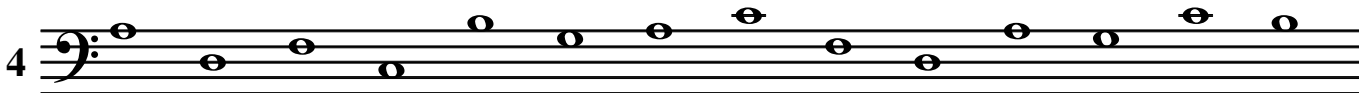


Lecture de notes: Fa à Do**Lecture de notes: Fa à Do**

Lecture de notes: Do à Do

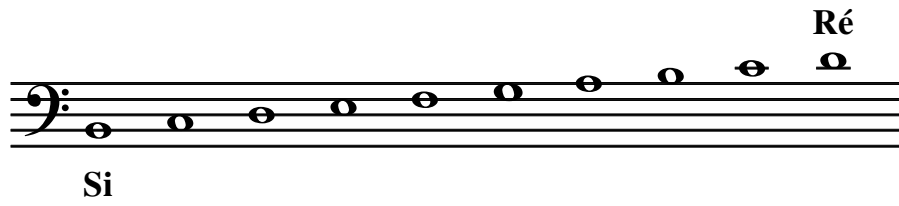


Do Ré Mi Fa Sol La Si Do



Lecture de notes: Si grave - Ré aigu

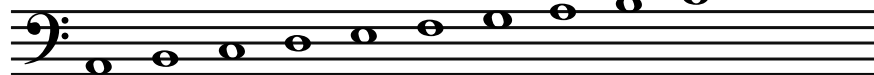
LN 7



Lecture de notes: La grave - Mi aigu

LN 8

Ré Mi



La Si

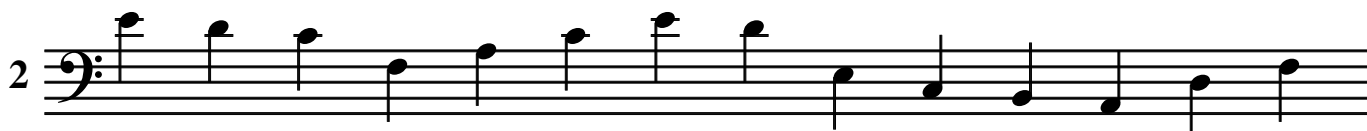
A musical staff in bass clef showing a sequence of notes. The notes are: La (grave), Si, Ré, Mi, Fa, Sol, La, Si, Ré, Mi, Fa, Sol, La, Si, Ré, Mi. The notes Ré and Mi are marked with a sharp symbol (#).

1



A musical staff in bass clef containing 14 quarter notes: La, Si, Ré, Mi, Fa, Sol, La, Si, Ré, Mi, Fa, Sol, La, Si.

2



A musical staff in bass clef containing 14 quarter notes: Ré, Mi, Fa, Sol, La, Si, Ré, Mi, Fa, Sol, La, Si, Ré, Mi.

3



A musical staff in bass clef containing 14 quarter notes: Ré, Mi, Fa, Sol, La, Si, Ré, Mi, Fa, Sol, La, Si, Ré, Mi.

4



A musical staff in bass clef containing 14 quarter notes: Ré, Mi, Fa, Sol, La, Si, Ré, Mi, Fa, Sol, La, Si, Ré, Mi.

5



A musical staff in bass clef containing 14 quarter notes: Ré, Mi, Fa, Sol, La, Si, Ré, Mi, Fa, Sol, La, Si, Ré, Mi.

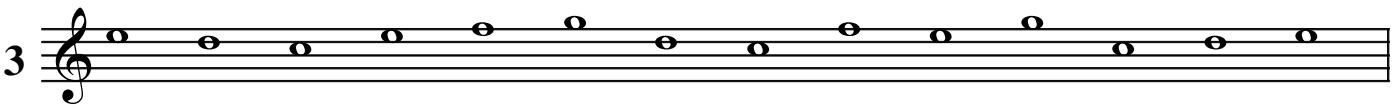
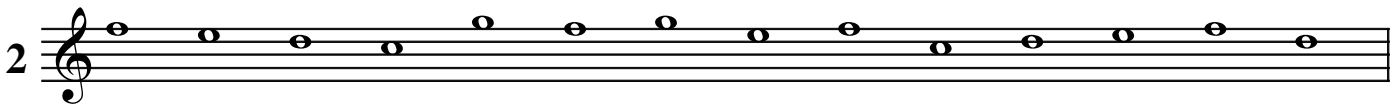
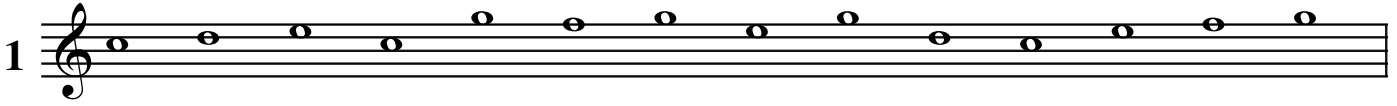
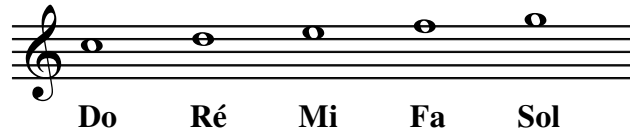
6



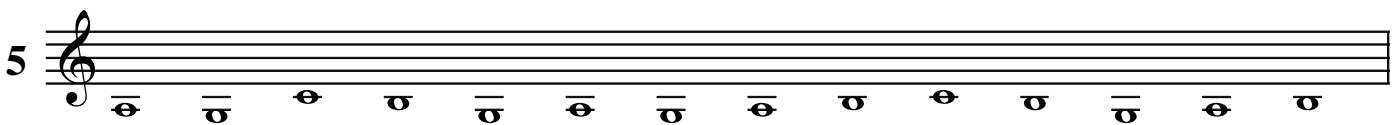
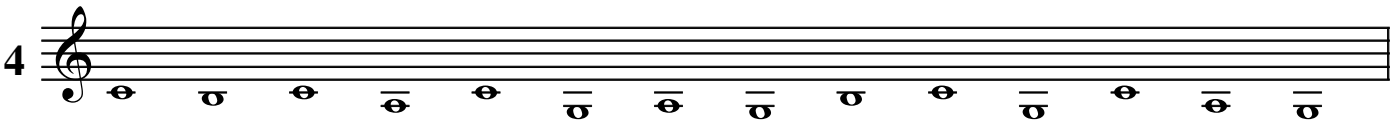
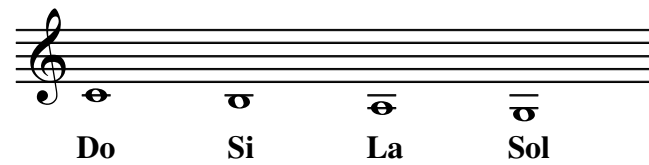
A musical staff in bass clef containing 14 quarter notes: Ré, Mi, Fa, Sol, La, Si, Ré, Mi, Fa, Sol, La, Si, Ré, Mi.

Lecture de notes: Do à Sol - Notes aiguës

LN 9



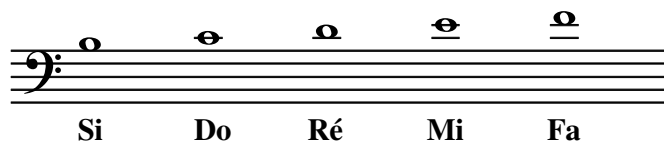
Lecture de notes: Do à Sol - Notes graves



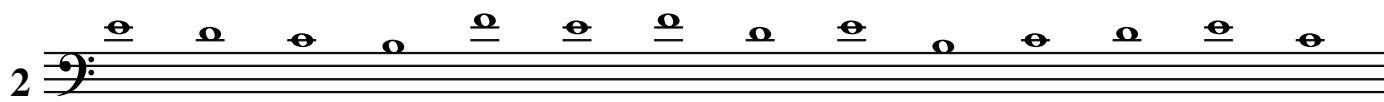
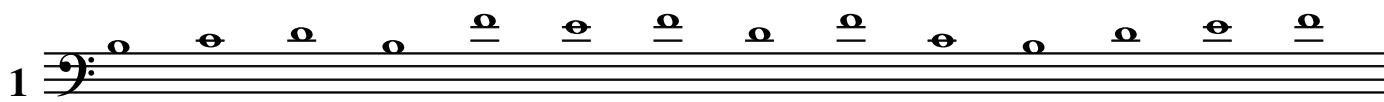
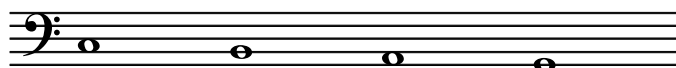
Lecture de notes: Sol grave - Sol aigu

LN 10

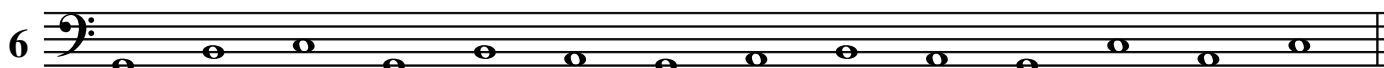
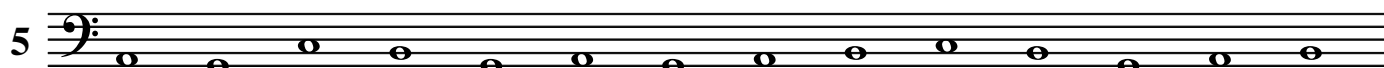


Lecture de notes: Si à Fa - Notes aigues

Si Do Ré Mi Fa

**Lecture de notes: Do à Sol - Notes graves**

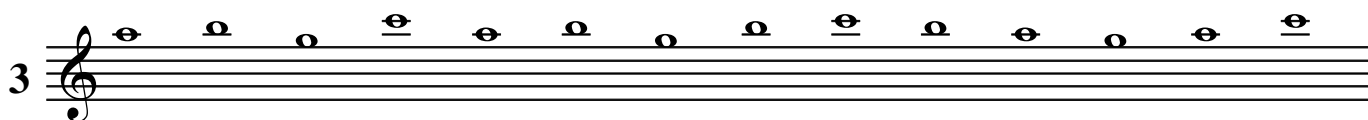
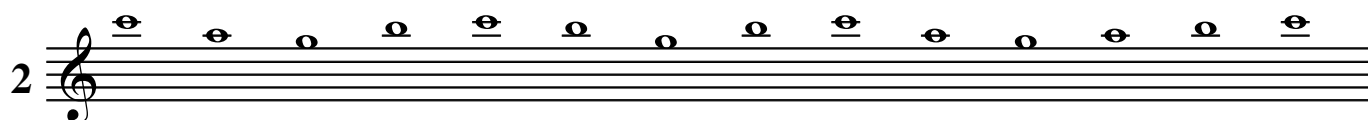
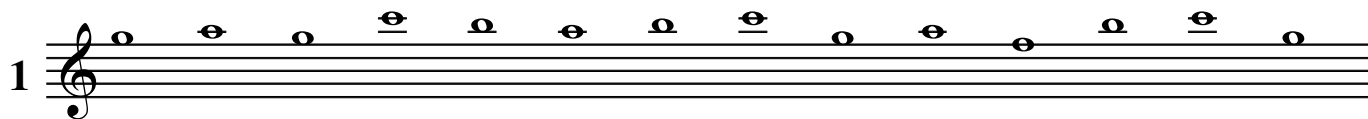
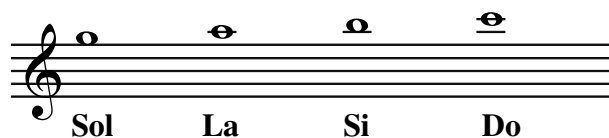
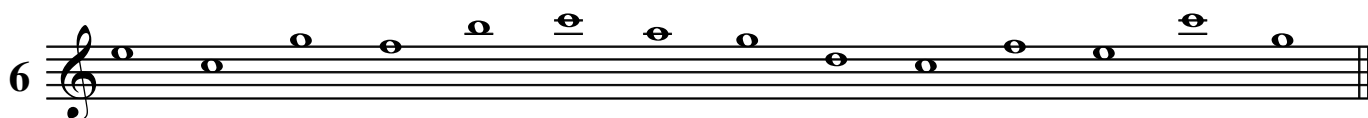
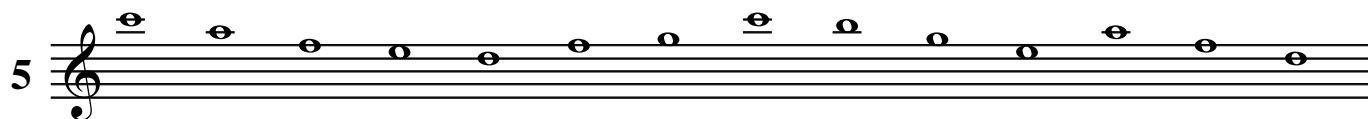
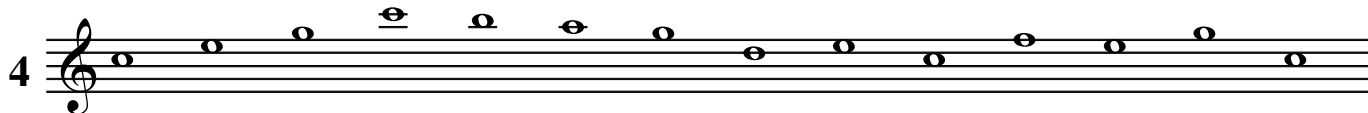
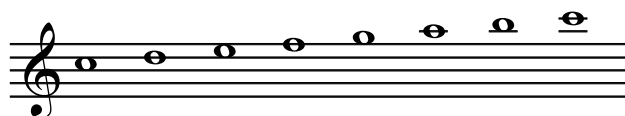
Do Si La Sol



Lecture de notes: Sol grave - Fa aigu

LN 12



Lecture de notes: Sol à Do aigu**Lecture de notes: Do à Do aigu**

Lecture de notes: Sol à Do aigu

A musical staff in bass clef showing five notes: Sol (G), Fa (F), Mi (E), Ré (D), and Do (C). Each note is a half note with a stem pointing downwards.

1

A musical staff in bass clef containing 14 notes. The sequence starts with Sol (G) on the first line, moves down to Fa (F) on the first space, then Mi (E) on the first line, Ré (D) on the first space, and Do (C) on the first line. It then continues with a series of notes: Do (C) on the first space, Ré (D) on the first line, Mi (E) on the first space, Fa (F) on the first line, Sol (G) on the first space, Fa (F) on the first line, Mi (E) on the first space, Ré (D) on the first line, Do (C) on the first space, Ré (D) on the first line, Mi (E) on the first space, Fa (F) on the first line, Sol (G) on the first space, and Do (C) on the first line.

2

A musical staff in bass clef containing 14 notes. The sequence starts with Do (C) on the first space, Ré (D) on the first line, Mi (E) on the first space, Fa (F) on the first line, Sol (G) on the first space, Fa (F) on the first line, Mi (E) on the first space, Ré (D) on the first line, Do (C) on the first space, Ré (D) on the first line, Mi (E) on the first space, Fa (F) on the first line, Sol (G) on the first space, and Do (C) on the first line.

3

A musical staff in bass clef containing 14 notes. The sequence starts with Do (C) on the first space, Ré (D) on the first line, Mi (E) on the first space, Fa (F) on the first line, Sol (G) on the first space, Fa (F) on the first line, Mi (E) on the first space, Ré (D) on the first line, Do (C) on the first space, Ré (D) on the first line, Mi (E) on the first space, Fa (F) on the first line, Sol (G) on the first space, and Do (C) on the first line.

Lecture de notes: Do à Do grave

A musical staff in bass clef showing five notes: Do grave (C), Ré (D), Mi (E), Fa (F), and Sol (G). Each note is a half note with a stem pointing downwards.

4

A musical staff in bass clef containing 14 notes. The sequence starts with Do grave (C) on the first space, Ré (D) on the first line, Mi (E) on the first space, Fa (F) on the first line, Sol (G) on the first space, Fa (F) on the first line, Mi (E) on the first space, Ré (D) on the first line, Do grave (C) on the first space, Ré (D) on the first line, Mi (E) on the first space, Fa (F) on the first line, Sol (G) on the first space, and Do grave (C) on the first line.

5

A musical staff in bass clef containing 14 notes. The sequence starts with Do grave (C) on the first space, Ré (D) on the first line, Mi (E) on the first space, Fa (F) on the first line, Sol (G) on the first space, Fa (F) on the first line, Mi (E) on the first space, Ré (D) on the first line, Do grave (C) on the first space, Ré (D) on the first line, Mi (E) on the first space, Fa (F) on the first line, Sol (G) on the first space, and Do grave (C) on the first line.

6

A musical staff in bass clef containing 14 notes. The sequence starts with Do grave (C) on the first space, Ré (D) on the first line, Mi (E) on the first space, Fa (F) on the first line, Sol (G) on the first space, Fa (F) on the first line, Mi (E) on the first space, Ré (D) on the first line, Do grave (C) on the first space, Ré (D) on the first line, Mi (E) on the first space, Fa (F) on the first line, Sol (G) on the first space, and Do grave (C) on the first line.

Lecture de notes: mélange clé de sol

LN 15



